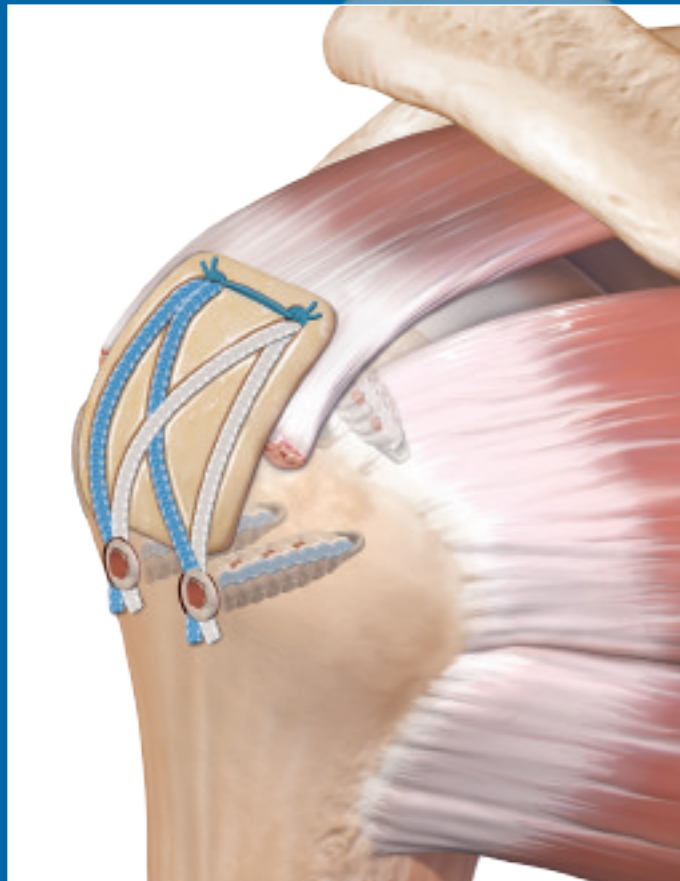




Massive Rotator Cuff Repair and Augmentation using  
the SpeedBridge™ Repair System and ArthroFLEX®  
Dermal Matrix

Surgical Technique

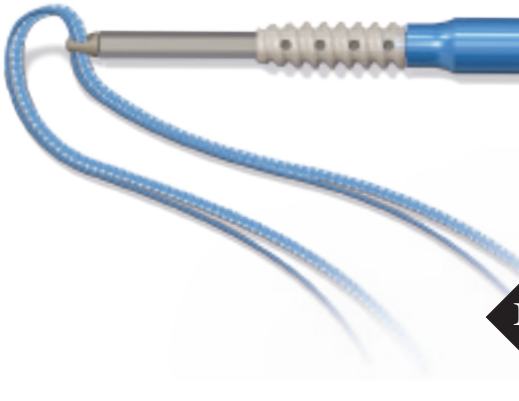


# Massive Rotator Cuff Repair

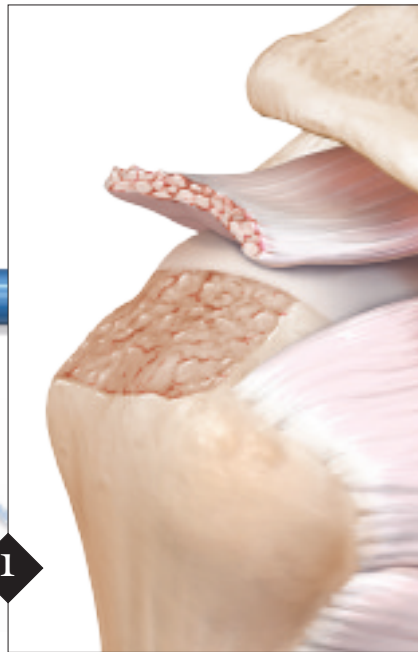


# Massive Rotator Cuff Repair and Augmentation using the SpeedBridge™ Repair System and ArthroFLEX® Dermal Matrix

Appropriate releases are usually required to achieve repair of the large to massive size tears that require augmentation. The tuberosity is prepared by removing remnant soft tissue to a light bleeding surface and a margin convergence can be performed.



1



The SpeedBridge rotator cuff repair can easily be combined with the ArthroFLEX Decellularized Dermal Matrix to provide complete restoration on challenging repairs.



2

Two SwiveLock® C's loaded with a FiberTape® and #2 FiberWire® are inserted into the medial row.

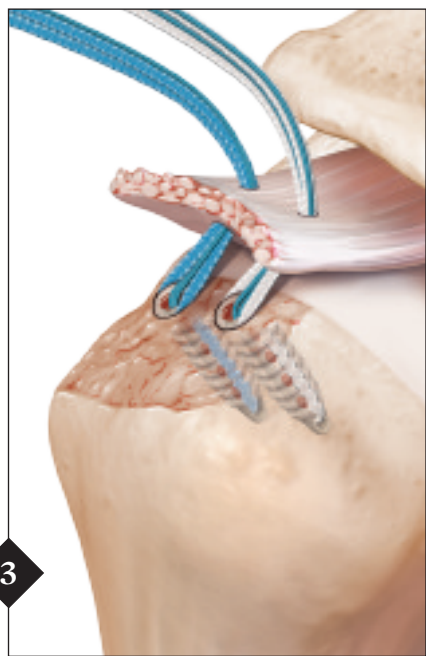


## Decellularized Bio-Implant for Soft Tissue Repair

### High Performance Extracellular Matrix

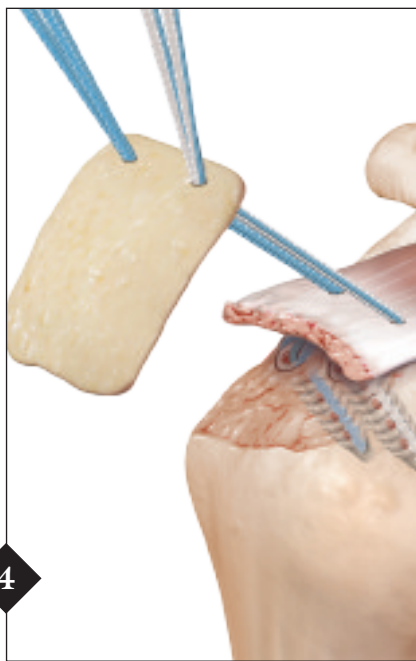
ArthroFLEX is an acellular dermal extracellular matrix intended for supplemental support and covering. Matracell®, a patented and validated process by LifeNet Health®, renders the ArthroFLEX allograft dermis acellular, without compromising biomechanical or biochemical properties. This process allows the matrix to retain its growth factors, native collagen scaffold, and elastin, which are required for healing.





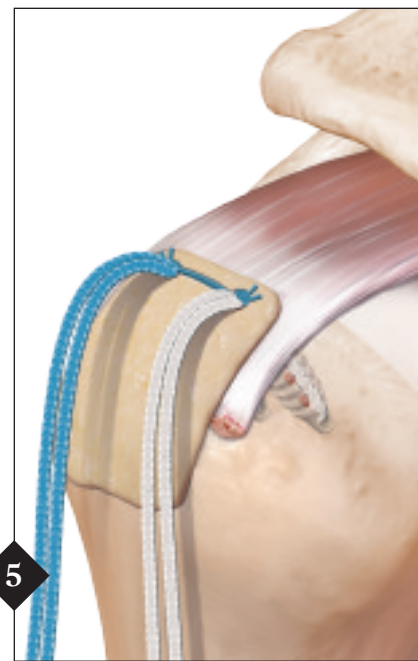
3

Shuttle both sets of suture through the tendon from each anchor using a Scorpion™ and FiberLink™.



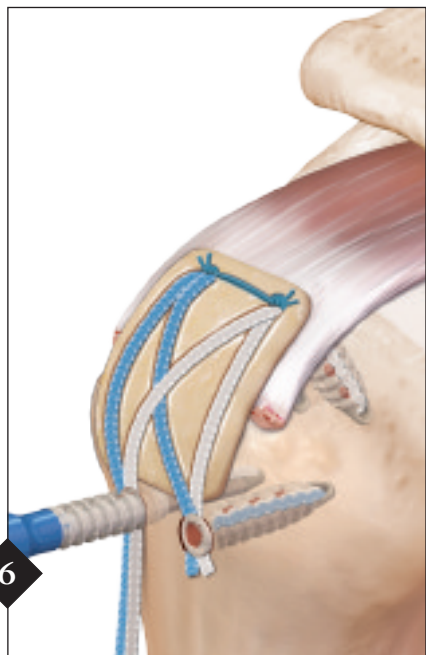
4

Shuttle both sets of suture through the ArthroFLEX® using a Scorpion and FiberLink. Position the ArthroFLEX firmly against the tendon while pulling tension on sutures. A grasper can be used to slide the ArthroFLEX graft into place.



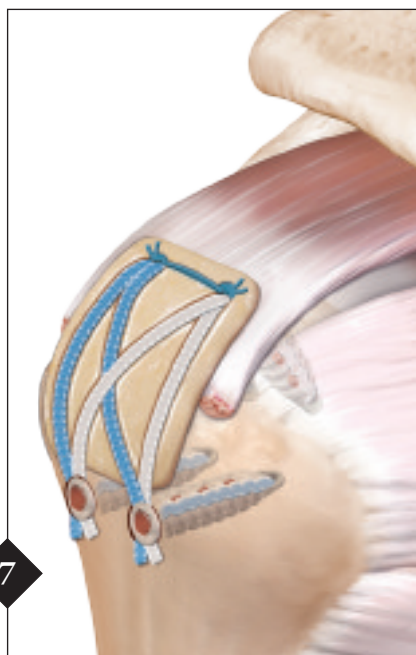
5

Tie one FiberWire® suture from each anchor sealing off the medial row of the repair.



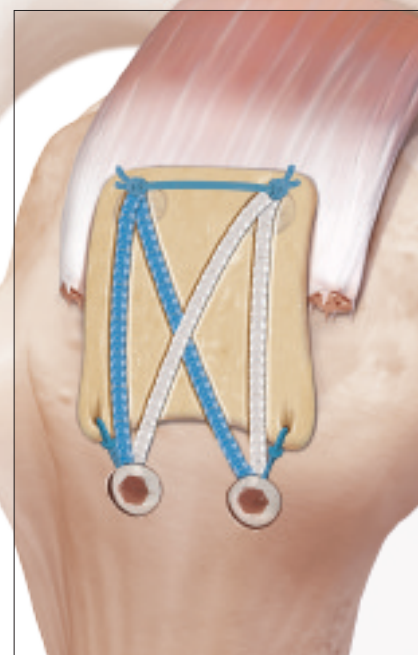
6

Insert the lateral row of SwiveLock® anchors using the standard SpeedBridge technique.



7

Additional FiberLink sutures can be added to the lateral side of the ArthroFLEX to add tension to the construct.



## Ordering Information

### Implants/Disposables:

Bio-SwiveLock™ C, 4.75 mm x 19.1 mm, closed eyelet	AR-2324BSLC
Bio-SwiveLock C, 5.5 mm x 19.1 mm, closed eyelet	AR-2323BSLC
Bio-SwiveLock SP, 4.75 mm x 24.5 mm, self-punching	AR-2324BSLM
Bio-SwiveLock SP, 5.5 mm x 24.5 mm, self-punching	AR-2323BSLM
FiberTape®, 2 mm, 7" (blue) each end tapered to #2 FiberWire, 30"	AR-7237-7
TigerTape™, 2 mm, 7" (white/black) each end tapered to #2 TigerWire, 30"	AR-7237-7T
FiberLink™, #2 FiberWire (blue) w/closed loop	AR-7235
MultiFire Scorpion Needle	AR-13995N
Scorpion™ Needle	AR-13990N
SureFire® Scorpion Needle	AR-13991N
PassPort Button Cannula™, 8 mm I.D. x 2 cm	AR-6592-08-20

*BioComposite™, PEEK, and titanium anchor options also available*

### Instruments:

Punch, for 5.5 mm Corkscrew® FT and 4.75 mm and 5.5 mm SwiveLock	AR-1927PB
Disposable Punch, for 5.5 mm Corkscrew FT and 4.75 mm and 5.5 mm SwiveLock	AR-1927PBS
MultiFire Scorpion Suture Passer	AR-13995
Scorpion Suture Passer, 16 mm	AR-13990
Humpback Scorpion, 16 mm	AR-13993
FiberTape Retriever w/SR Handle	AR-13974SR
Suture Cutter, 4.2 mm, open-ended, left notch	AR-11794L

### ArthroFLEX® Decellularized Dermis:

<b>ArthroFLEX 1.0 mm (thickness = .76 mm - 1.24 mm)</b>	
Decellularized Dermis 40 mm x 40 mm	AFLEX400
Decellularized Dermis 40 mm x 70 mm	AFLEX401
<b>ArthroFLEX 1.5 mm (thickness = 1.26 mm - 1.74 mm)</b>	
Decellularized Dermis 35 mm x 35 mm	AFLEX100
Decellularized Dermis 40 mm x 70 mm	AFLEX101
<b>ArthroFLEX 2.0 mm (thickness = 1.76 mm - 2.24 mm)</b>	
Decellularized Dermis 35 mm x 35 mm	AFLEX200
Decellularized Dermis 40 mm x 70 mm	AFLEX201
<b>ArthroFLEX 3.0 mm (thickness = 2.50 mm - 3.50 mm)</b>	
Decellularized Dermis 40 mm x 70 mm	AFLEX301

*ArthroFLEX® should be ordered through LifeNet Health Customer Service at 888-847-7831*

*This description of technique is provided as an educational tool and clinical aid to assist properly licensed medical professionals in the usage of specific Arthrex products. As part of this professional usage, the medical professional must use their professional judgment in making any final determinations in product usage and technique. In doing so, the medical professional should rely on their own training and experience and should conduct a thorough review of pertinent medical literature and the product's Directions For Use.*

LifeNet Health helps to save lives, restore health and give hope to thousands of patients each year. We are the world's most trusted provider of transplant solutions, from organ procurement to new innovations in bio-implant technologies and cellular therapies – a leader in the field of regenerative medicine, while always honoring the donors and health care professionals that allow the healing process.



The LifeNet Health logo, ArthroFLEX and Matracell are registered trademarks of LifeNet Health, Inc., Virginia Beach, VA. (68-40-079 Rev. 01)

View U.S. Patent information at [www.arthrex.com/virtual-patent-marking](http://www.arthrex.com/virtual-patent-marking)

©2015, Arthrex Inc. All rights reserved. LT1-0822-EN\_B